

# SJ-SDC(D<sub>3</sub>)

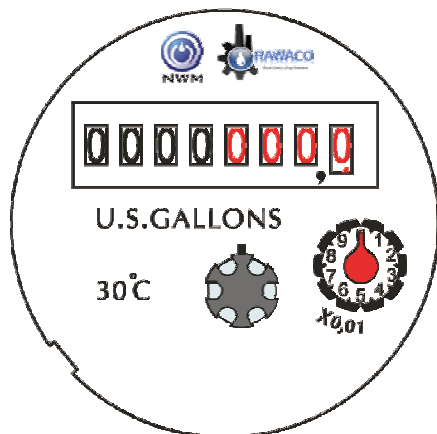
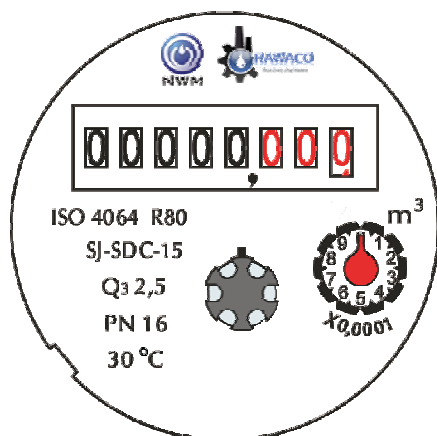
## Single-jet Super Dry Cold Water Meter

### DN15~DN40 Screw Connection



### Dial Plate

DN15~DN40



It is a Single-jet Super dry water meter for residential application in sizes 15 mm to 40 mm for cold meter.

### Features :

- Magnetic drive, lower transmission resistance
- Magnetic shield, for external magnetic field protection
- Sealed dry dial register ensures clear reading
- Register can rotate more than 360° for easy reading in any position

### Standards Compliance :

- ISO 4064 2005 R=80
- EEC marked
- Conforming to IS 779:1994

### Optional Features :

- Several lengths and connections available on request
- Non return valve
- U.S. gallon (U.S.G.) for selecting
- Can be equipped with reed switch

### Working Conditions :

- Water temperature :  $\leq 30^{\circ}\text{C}$  (or  $50^{\circ}\text{C}$ )
- Water pressure :  $\leq 1.6$  MPa

### Installation Requirements :

- The meter should be installed in horizontal position with the register facing upward
- The meter must be installed with the direction of the flow as indicated by the arrow cast in the meter body
- Pipeline must be flushed before installation
- The meter should be constantly full of water during operation

IS:779-1994



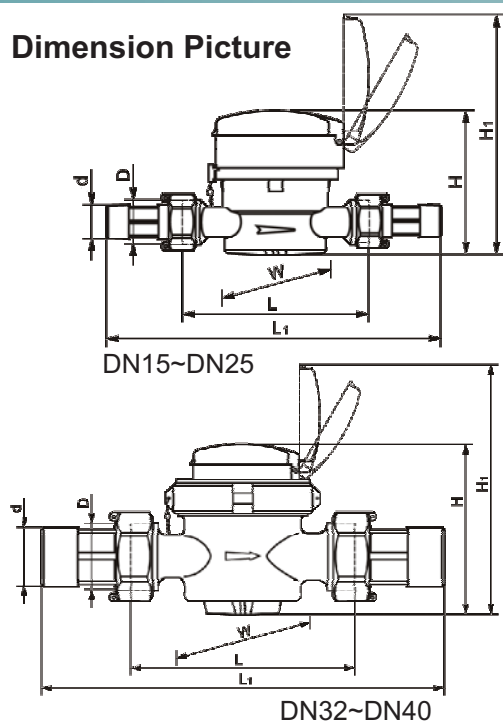
EEC Approved



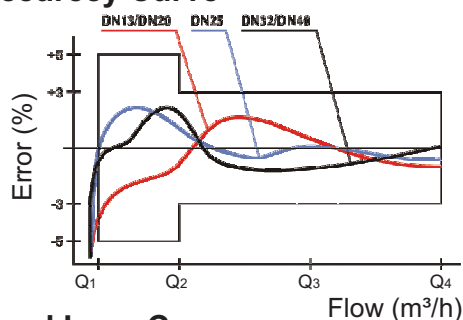
# SJ-SDC(D<sub>3</sub>)

## Single-jet Super Dry Cold Water Meter

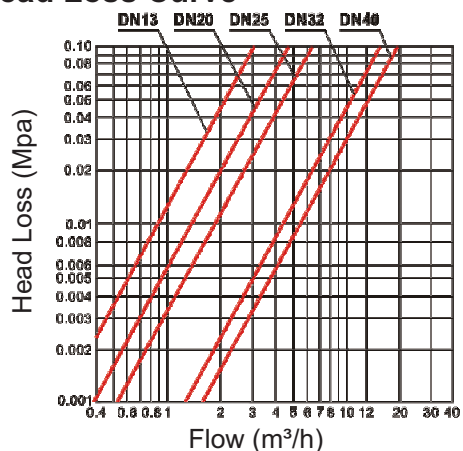
Dimension Picture



Accuracy Curve



Head Loss Curve



## Technical Characteristics

### Dimensions and Weights

Nominal diameter	DN	13	20	25	32	40
Body thread	D	G3/4B	G1B	G1½B	G1½B	G2B
Connector thread	d	R1/2	R3/4	R1	R1¼	R1½
Body length	mm	L	80/110	130	160	200
Overall length	mm	L1	174/204	234	280	331
Width	mm	W	80	80	80	110
Meter height	mm	H	88	88	96	123
Working height	mm	H1	143	143	151	178
Weight without connectors	Kg		0.5/0.6	0.7	1.05	2.43
Weight with connectors	kg		0.68/0.78	0.98	1.57	2.89

- "L1" is the total length when coupling gaskets without compression.
- The weight is only for reference.

### Main Technical Data (ISO 4064:2005 R=80)

Nominal diameter	DN	13	20	25	32	40
Measuring rate	Q3/Q1	80	80	80	80	80
Maximum flow rate	m³/h	Q4	3.125	5	7.875	12.5
Nominal flow rate	m³/h	Q3	2.5	4	6.3	10
Transition flow rate	l/h	Q2	50	80	126	200
Minimum flow rate	l/h	Q1	31.3	50	78.8	125

### Description of Register

Nominal diameter		DN13/20/25/32/40
Number of black numbered roller		5
Number of red numbered roller		3
Number of red pointer		1
Maximum reading	m³	99999.9999
Minimum reading	m³	0.0001
Minimum graduation	L	0.05

### Maximum Permissible Error

When water temperature Class is T30

In the lower zone from Q<sub>1</sub> inclusive up to but excluding Q<sub>2</sub> is ±5%  
In the upper zone from Q<sub>2</sub> inclusive up to and including Q<sub>4</sub> is ±2%

When water temperature Class is T50

In the lower zone from Q<sub>1</sub> inclusive up to but excluding Q<sub>2</sub> is ±5%  
In the upper zone from Q<sub>2</sub> inclusive up to and including Q<sub>4</sub> is ±3%

IS:779-1994



EEC Approved

